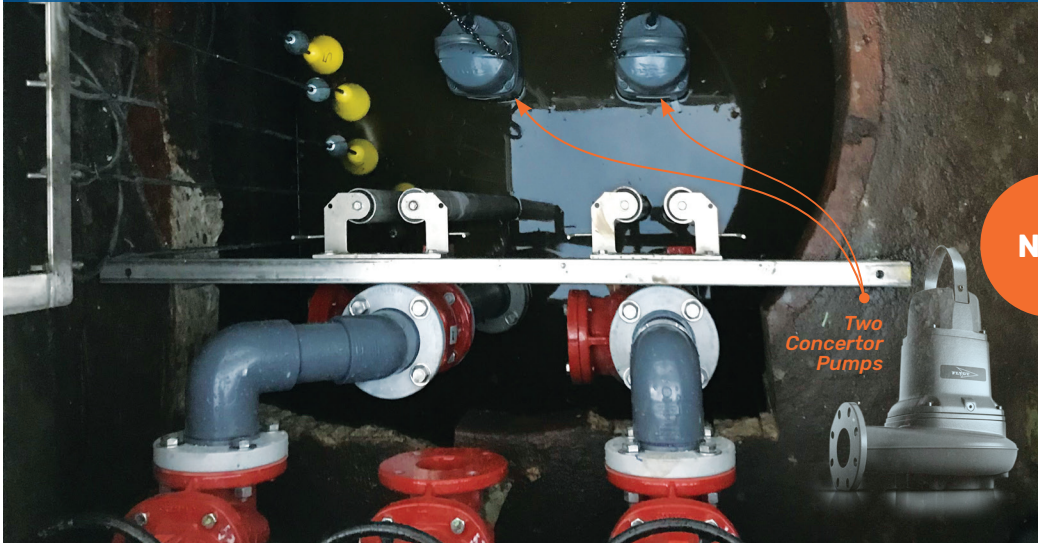


## Enhancing Curb Appeal while Conforming to Electrical Code



*The lift station located just outside the visitor's entrance at a local marine equipment manufacturer's facility was well overdue for servicing, and frankly not very aesthetically appealing.*

### PROBLEM:

The station was old, outdated, and generally in poor condition. Located inside the station were two vertical sewage lift pumps that had seal and motor issues, as well as issues with their float system and pumps controls. One pump was completely unsalvageable. During the inspection, numerous electrical issues were found that accounted for a systemic hazardous condition. Exposed wiring and faulty pumps made for an explosive environment. The customer was not aware that the station did not conform to National Electrical Code and posed a considerable safety concern.

### SOLUTION:

Kennedy Industries' field service and sales teams devised a turnkey solution, which was to fully rehabilitate their station. Initially utilizing bypass pumping for the effluent coming into to the station, the team then installed two new state of the art Flygt Concertor pumps, including a new control panel, guide rails, pump bases, check and gate valves, floats and discharge piping. All electrical issues were addressed by the newly installed equipment and brought up to code. The customer also wanted to address the stations curb appeal, so during the site work old cinder blocks were removed, the control panel was moved closer to the building and a new hatch was installed to make the station flush with the grade.

*After two long days, and a great team effort with the customer, the station was up and running.*

**ABOVE:** The rehabilitated lift station with two new state-of-the-art Concertor pumps, a new control panel, guide rails, check and gate valves, discharge piping and a new steel hatch for the station.  
**BOTTOM:** The original lift station.

