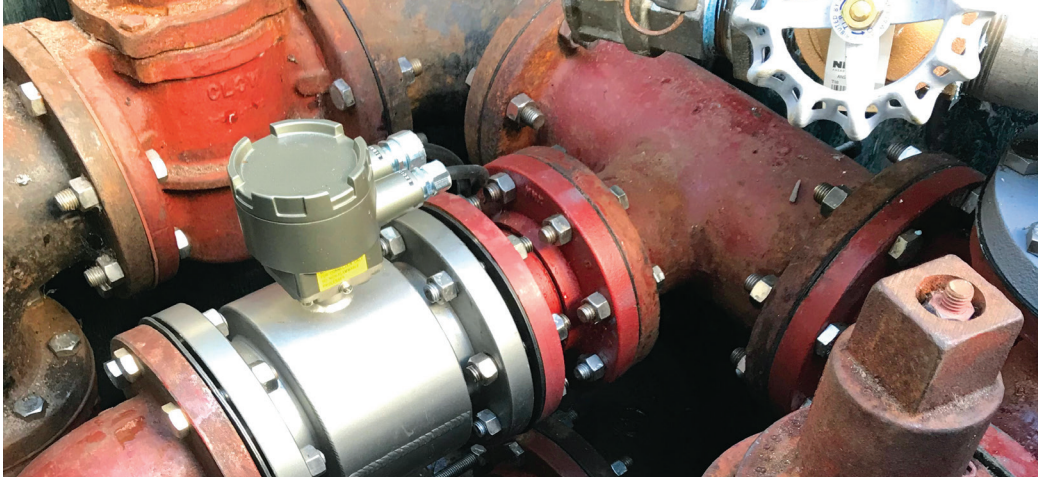


Lee Street Pump Station Secures Reliable Metering



The local city was overwhelmingly frustrated with their inability to obtain useable information from their existing Transit Time Sonic Coupled dual head flowmeters.

PROBLEM:

The flowmeter heads were mounted on pump discharge piping in the sanitary wet well. Performing maintenance or trouble shooting was difficult because of the requirements for confined space entry procedures. An alternative method of metering was necessary to provide a safe solution at a reasonable expense for the city. Lack of space within the compact pre-fabricated valve chamber presented a major challenge to mount a conventional flowmeter, demanding other options be researched.

SOLUTION:

After review of the available options, Toshiba's "mount anywhere" flowmeter was selected. Electromagnetic flowmeters are instruments for measuring flow of conductive fluids. The Toshiba LSQ meter provides a 0.5% accuracy rate while only requiring One upstream and Zero downstream pipe diameters. This lay length specification is crucial when planning for the installation of flowmeters. The Toshiba solution avoided the need to install a separate metering pit downstream, saving the city considerable time and money. The customer was ecstatic when the Toshiba option was presented. Together with Toshiba's standard 10-year warranty, the final installation put their frustrations to rest.

Above: (left) Detail of the newly installed Toshiba "mount anywhere" flowmeter. (right) Station configuration before the flow meter installation.

Below: Finished installation with a separately wall-mounted flowmeter.



Kennedy Industries was proud to bring such a valuable solution to the table. Our 60+ years of experience in the water and wastewater industry secured the trust of our client. Water is our Business. Michigan is our Turf.