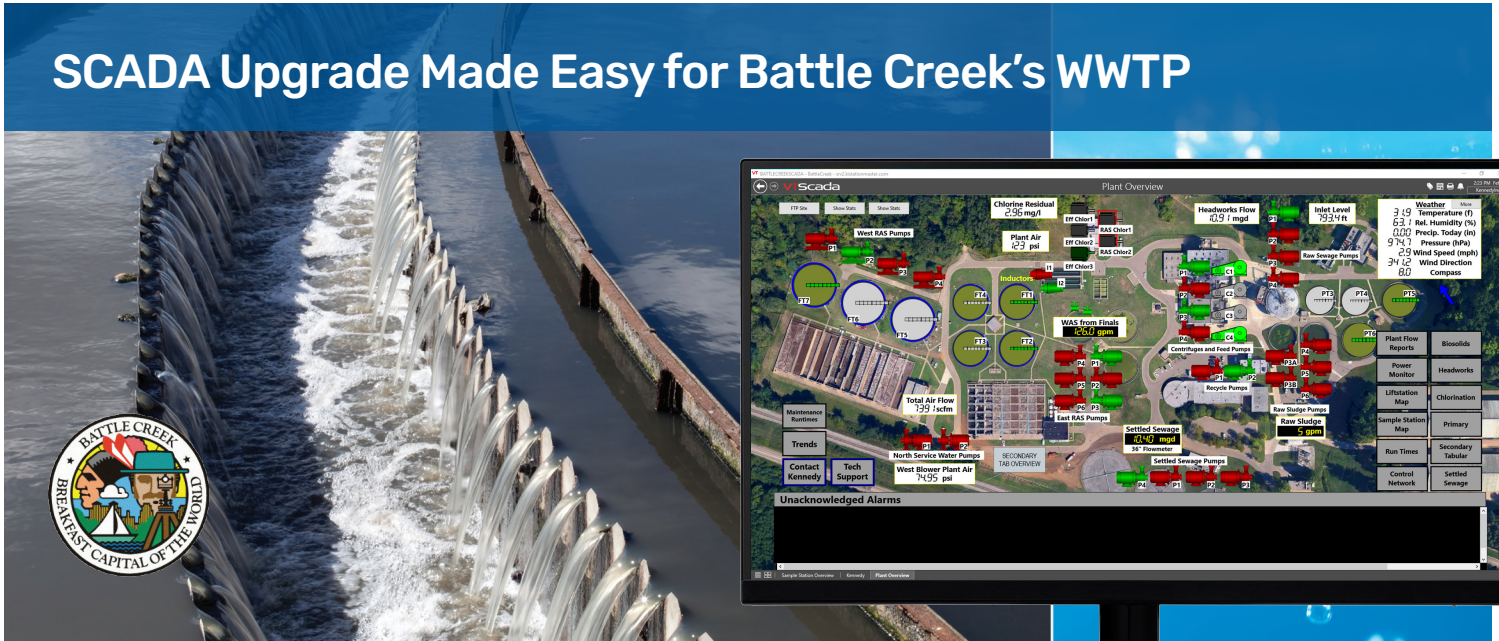


SCADA Upgrade Made Easy for Battle Creek's WWTP



Battle Creek's WWTP was frustrated with having to reinstall existing SCADA software on each new or upgraded computer. Doing so, exhausted valuable resources, and their patience.

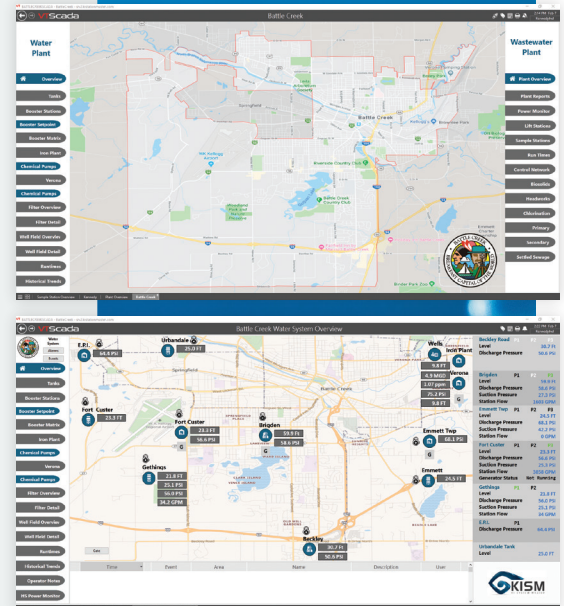
PROBLEM:

The environment at Battle Creek's Waste Water Treatment Plant was caustic to the exposed computers, and they consequently needed to be replaced or upgraded more often. With each new computer, the old SCADA software had to be reinstalled. The SCADA screens also needed routine updates, requiring programmers to be onsite and manipulate code to meet Battle Creek's requirements. Any rewritten code might result in the loss of historical data. Their SCADA system had no remote access capabilities, so if operators wanted the status of remote lift stations, they had to be present at designated computers. The alarm viewing system was also limited to onsite computers. These alarms were confusing and their set points were fixed, not variable.

SOLUTION:

Kennedy's Control Group provided a turn-key solution with KISM, a reliable internet-hosted SCADA system. Being cloud-based, it freed Battle Creek's IT staff from on-site server maintenance. With KISM, a control engineer can now update every SCADA screen across all devices monitoring the system. Because KISM is a hosted system, an operator can view SCADA screens from anywhere, on any device that has internet access. Each status can now trend data, which can be displayed as organized graphs. Battle Creek's plant can even change the alarm set points and callouts. In addition to solving every problem Battle Creek was experiencing, KISM saves them thousands of dollars per year.

Battle Creek was so pleased with their new WWTP SCADA system that they elected to upgrade their water system to KISM in 2019.



The KISM team updates the customers servers and software at no additional cost.

Kennedy automatically performs offsite backups and provides a 24/7 SCADA support team of control specialists.