

A Comprehensive SCADA Upgrade for Reliable Integration



VTSCADA screens now remotely manage YCUA's SCADA system.



Ypsilanti Community Utilities Authority (YCUA) needed a more technologically advanced SCADA system to better achieve integration and redundancy.

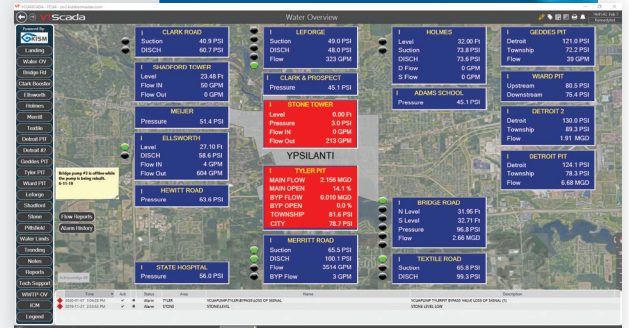
PROBLEM:

YCUA needed to replace their aging SCADA system to better serve their current demands. Their SCADA infrastructure was cumbersome with six servers performing critical functions. Their SCADA software was over 10 years old, and lacked many state-of-the-art features, including security protection. IT leadership was frustrated with the excessive manual effort needed to run the system. Operations wanted better remote monitoring capabilities and overall reliability, and Maintenance hoped to take advantage of analyzing historical data to help in their decision making process.

SOLUTION:

Kennedy's Controls Group first assessed YCUA's SCADA needs and replaced their existing Wonderware software with VTScada software. It simplified the infrastructure by only utilizing one server instead of six. The Controls Group then installed KISM to manage the datacenter service. As a result, Kennedy can now manage the complete SCADA infrastructure and both parties datacenters, freeing YCUA from managing this themselves. Kennedy also provided secure remote access to the SCADA screens, so the YCUA datacenters no longer have to access the internet, which better protects their onsite servers from cyberattack.

YCUA's leadership is pleased to have a more reliable, secure system that requires less time to manage and provides trend information for diagnostics.



Kennedy datacenters are hot failover to onsite SCADA datacenters, which adds reliability.

Kennedy automatically performs offsite backups and provides a 24/7 SCADA support team.