

Expert Pump Repair Eases Pain for Mount Clemens WWTP



Kennedy's repair of malfunctioning pumps at the Mount Clemens Wastewater Treatment Plant, provides immediate relief from constant influent events and safety hazards.

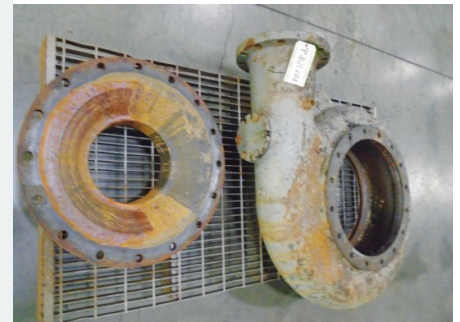
PROBLEM:

The three main pumps at Mount Clemens Wastewater Treatment Plant were not operating properly. All three pumps failed to work at the same time, leaving the city vulnerable to influent events. Even when running, the pumps operated at half capacity and clogged constantly. Their frequent failure created operational and safety issues, not too mention added costs and inconvenience. The city needed relief from their pain, and fast.

SOLUTION:

Mount Clemens engaged Kennedy's repair team for a full evaluation. Upon inspection, it was determined virtually every wetted part needed to be replaced or reworked. The Kennedy team not only restored the pumps to design condition, but assisted in their start up upon completion. The client was so satisfied, they made plans to send their remaining pumps to Kennedy for repair.

BEFORE: The volute and wear plate contributed to the reduction in efficiency. Registers of volute and wear ring are oversized by ½".



AFTER: Volute registers were machined for stainless steel inserts to restore registers. Repaired to OEM specifications, the final assembly increased flow almost 50%.

