



KENNEDY
INDUSTRIES

PUMPING
FLOW CONTROL
PROCESS
AUTOMATION



WARNING

IF YOU
DON'T SCHEDULE
MAINTENANCE,
YOUR EQUIPMENT
WILL SCHEDULE
IT FOR YOU.

FIELD SERVICE

Start to Finish Service. *Support through the entire product lifecycle.*

OUR REACH IS WIDE.
OUR SERVICES DEEP.
OUR WORD IS OUR BOND.



AT KENNEDY INDUSTRIES we make you priority one. We are among the best at providing aftermarket services for pump, valve, control, and repair, but what makes us so unique is our dedication to customer service at every step of the way. We appreciate your business and work tirelessly to solve your problem and relieve your pain.

ON-SITE FIELD SERVICE

REPAIR SUPPORT

TRANSPORTATION

START-UP

MAINTENANCE

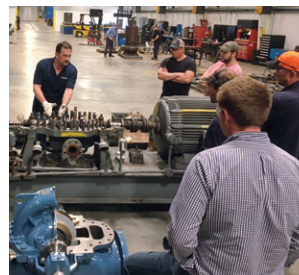
Field Service

We bring the solution to you.

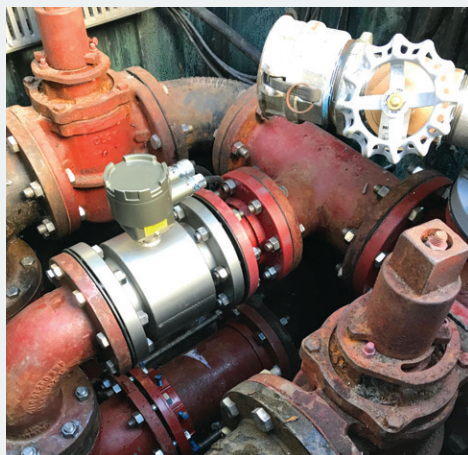
KENNEDY INDUSTRIES offers a broad range of services that allows us to troubleshoot the largest pump at a power plant, to the smallest storm water or sanitary station. We evaluate your equipment, provide recommendations on how to fix the problem long term, and seek to improve the overall station operation.

Our services include:

- Vibration Analysis
- Laser Alignment
- Performance and Reliability Consultation
- Start Up Assistance
- On-Site Training Seminars
- Energy Audits

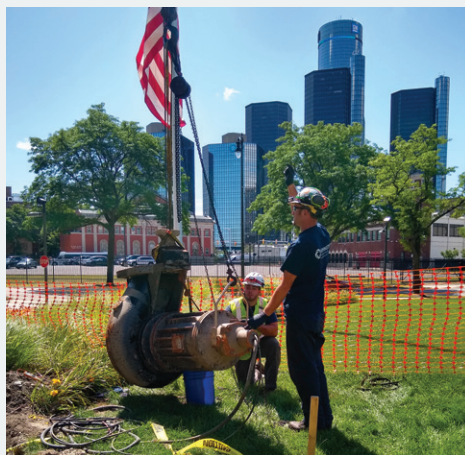


Our field service technicians have vast experience with submersible and industrial pumps, and are continually updating their knowledge through regular training in the classroom and on-site.



TOSHIBA FLOWMETER

The client was frustrated with their inability to obtain information from their existing flowmeter. It had been mounted on the pump discharge piping in the sanitary wet well, making maintenance difficult. Kennedy installed a Toshiba's "mount anywhere" flowmeter. The Toshiba solution avoided the need to install a separate metering pit downstream, saving time and money.



DETROIT INSURANCE

A storm water station was showing a "seal fail" error. It needed to be addressed without interruption to service. On three consecutive Saturdays, our field service techs pulled all three pumps to repair or provide maintenance service, as well as extensive valve repair. It proved once again that an ounce of prevention can help avoid catastrophic failure.



ATTWOOD UPGRADE

Attwood's pump station was well overdue for servicing, and frankly not very aesthetically appealing. Our team installed two new state of the art Flygt Concertor pumps, including a new control panel, guide rails, pump bases, check and gate valves, floats, discharge piping, and bringing electrical issues up to code. Finally, a new hatch was installed to add curb side appeal.

FIELD SERVICES BACKED WITH:

Repair Support

No job is too big or too small.

At over 80,000 square feet, our repair facility at Kennedy Industries is equipped to handle any type of engineered or submersible pump repair, and includes a state-of-the-art test pit capable of up to 8 inch discharge and 200hp under load.

In addition to our fully equipped repair facility, Kennedy has 11 full time field service vehicles on the road performing start-ups, preventative maintenance contracts and warranty work. Our Field Service and Repair departments serve many states in the Midwest and beyond.



Great Lakes Water Authority (GLWA) called our Field Service Team to help evaluate why their Byron Jackson pump was under-performing.



BALANCING

Our capabilities are up to 90" in diameter and 10,000 pounds. We offer 3 different size balance machines to fit these ranges.



TEST PIT

Our state-of-the-art pit tests pumps to ensure O.E.M specifications and that the pump will operate on published curve as expected. It's utilized for repaired pumps, new pumps and troubleshooting of existing pumps.



PARTS REPLACEMENT

Kennedy Industries can provide you with O.E.M. pump and valve parts from a vast array of manufacturers. In addition, we're capable of reverse engineering parts, providing you with a time and cost effective alternative. We likely stock the raw materials necessary for our machine shop to build the parts within 24 hours when downtime is not an option.

Transportation

We have a tremendous capacity and extended range for field services throughout the Michigan area.

Kennedy Industries service trucks are equipped with boom cranes capable of lifting up to 8,000 pounds and with a maximum reach of up to 27'. For large pumps, we have large vehicles that can transport pumps up to 60 feet in length.



Start-up

Our team has the experience and expertise for complex start-ups, training, and ongoing service.

Our technicians can help train your staff, diagnose problems, calibrate flow instruments, and help manage the day to day operation of the equipment. We provide you with the best overall value to ensure that your facility is always operating at the top level.

Plan on preventative maintenance from Start Up. It will keep your equipment performing at peak efficiency, lengthen life cycle, and avoid any unnecessary expenses. It will also maintain manufacturers' warranties and ensure the reliability of your pump station, and the safety of your staff .



>
Pain relief
from the
get go!

Maintenance

Plus 24-HOUR Emergency Service!

Pump station preventative maintenance is recommended at least once per year to help sustain the efficiency and reliability of the pump station. Identifying minor repairs before they become a major or complete failure can save you thousands of dollars and eliminate downtime. Kennedy Industries has an entire fleet of service trucks and technicians readily available to maintain your station on an annual, semi-annual, quarterly or monthly basis. Each preventative maintenance contract is designed to meet your station's individual requirements.



> Maintain your pump stations on a monthly, quarterly, semi-annually, or annual basis.

OUR HISTORY

Calvin B. Kennedy founded our company in May of 1959 when he left his position as repair and service supervisor at a local pump repair shop. With \$102 he started Kennedy Pump Repair Company in the back of a pickup truck. His dedication and honesty soon established Kennedy as a successful pump repair facility servicing Southeast Michigan.

In 1968, Cal added a distributor type sales department to compliment the steady growth of the repair business. Kennedy Industries quickly transitioned from a loose entrepreneurial type operation to a systematic business, and as a result, was transformed into the dominant distributor for pumps in the State of Michigan.

ConValco, a company specializing in engineered valves was acquired in 1990. Its successful integration, along with other substantial investments, fueled such rapid growth that it forced one building expansion after another.

Today, we are fully equipped to provide the highest quality, most competitively priced repair services and products in the entire region.

Our history will never be forgotten, as Calvin's values of honesty and integrity account for our 60 years of success, and still apply today!

ON-SITE

> We evaluate your equipment, provide recommendations on how to fix the problem long term, and seek to improve overall station operation.

Our services include:

- Vibration Analysis
- Laser Alignment
- Performance and Reliability Consultation
- Start Up Assistance
- On-Site Training Seminars